

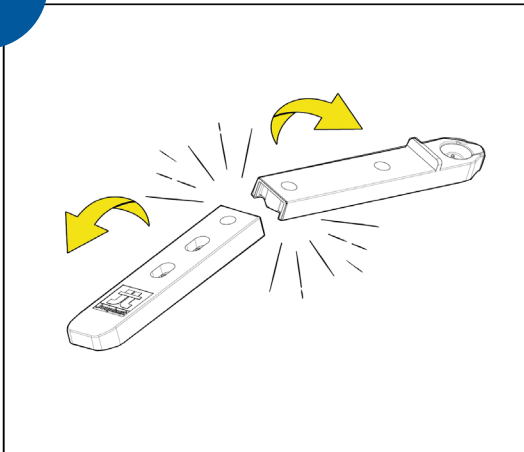
Jouplast®

LAYING YOUR WOODEN DECKING WITH FIXEGO®

FOR USE WITH WOODEN DECKING BOARDS WIDER THAN 150 MM

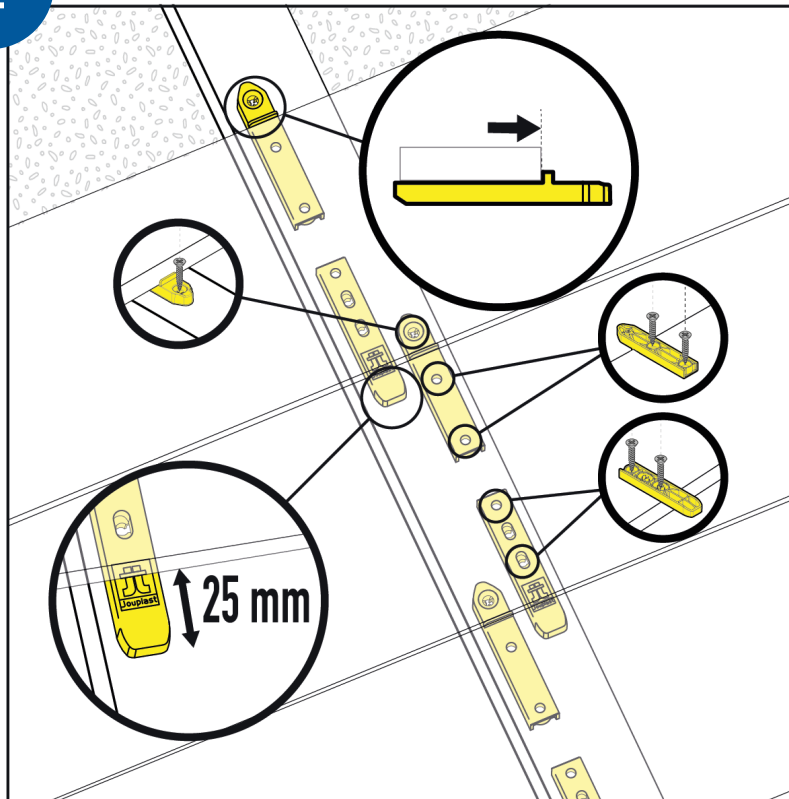
INSTALLATION WITHOUT ADJOINING BOARDS

1



Break Fixego® in half.

2



Position the half-fixing as shown in the diagram.



Provide 5 screws instead of 3 usually.