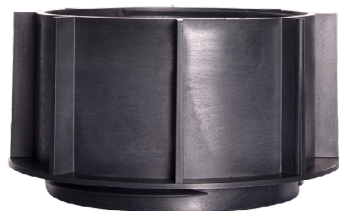


HEIGHT 60 MM FOR CLEMAN® & EASIO® RISER PEDESTAL



BENEFITS

- Optimised stability: extension to be screwed between the base and the nut.
- Stackable up to 4 extensions.
- Can be used with the 10 mm extension

APPLICATIONS

- Increase the height of CLEMAN® standard and self levelling risers.

RESISTANCE

- Resistance to crushing test exceeds 1T.

RECOMMENDATIONS

- Terraces and patios for pedestrian use only.
- Outdoor use only.
- Do not use more than 4 extensions.
- To screw on the riser basis.
- Always follow paving manufacturer recommendations to ensure the suitability of paving products for use with riser pedestals and the number of risers per m² to use. Qualification of compulsory "SELF-SUPPORTING" slabs, of class T7, T11 according to standard EN 1339:2004-02.



TECHNICAL DETAILS

- Material: recycled polypropylene
- Colour: black
- Diameter: 105 mm
- Height: 60 mm
- Weight: 114 g
- Resistance to temperature from -30°C to +60°C
- UV and frost resistant

PACKING

- Box of 40 parts (12 boxes per pallet - Stackable)