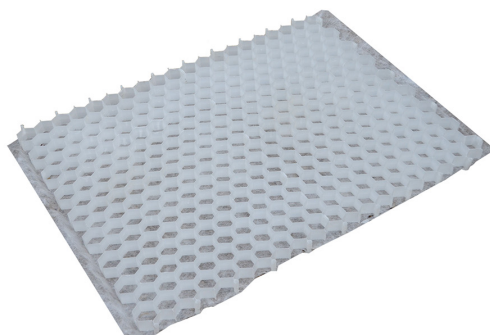


GRAVEL STABILISATION MAT - 30MM - SINGLE FOR LANDSCAPING AREA



BENEFITS

- Retains gravel.
- Ensures rapid drainage of rainwater.
- Geotextile membrane included (60 g/m²) and permanently bonded to the cells.
- Prevents ruts.
- Integrated assembly system prevents mats from separating.
- Can be used for vehicles with axle loadings of up to 20 tonnes and access for firefighters.
- Easy handling : light product.
- Can be installed on slopes up to 15% for pedestrian areas and 10% for vehicle use.
- The option to use zone markers.

APPLICATIONS

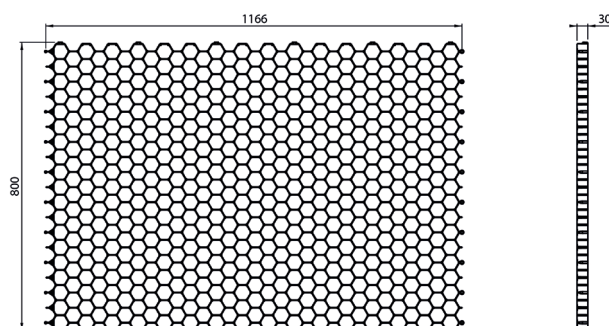
- Provides a stable platform for gardens, paths and pedestrian areas.
- Perfect for private parking, driveways and gravel access roads.
- Perfect for public, community, commercial, industrial use and for emergency vehicle access.
- Offers an aesthetic finish (product invisible at the end of the site).

RESISTANCE

- Resistance (empty) : 200 T/m².
- Resistance (filled) : 650T/m² (Test OLP 01183426-P3).

RECOMMENDATIONS

- To provide the stated load resistance, Alveplac® cells must be filled with gravel, plus an additional 2 cm top layer (Gravel ranking should be necessary occasionally).
- Fill using 5-15 mm or 8-16 mm gravel.
- For heavy traffic in urban area, It is recommended to use our reference Urbangravel®.
- Do not use with hot mixed asphalt.
- Suitable with the zone markers references IHBOUCALVGS10000 & IHBOUCALVBS10000. Count 2.2 zone markers per m² (quantity to be adapted according the environment and the site).
- For IFU, see the website.



TECHNICAL DETAILS

- Material: polypropylene
- Colour: white
- Overall dimensions: 1166 mm x 800 mm x 30 mm *
- Usable dimensions: 1150 mm x 790 mm x 30 mm *
- Wall thickness: ± 1.2 mm
- Usable area: 0.9085 m²
- Weight : 1.7 kg ie 1.87 kg/m²
- Cell structure: Hexagonal (honeycomb) / Diameter: 42 mm
- Membrane: Geotextile 60g/m² - permanently bonded to the cells
- Volume/gravel weight per sqm²: 40 liters - 60 kg
- Resistance to temperature from -30°C to +60°C
- UV and frost resistant

PACKING

- Pallet of 38 parts (stackable)

Document protected by copyright. Any reproduction, copy, extraction, reuse in others publications, translation or adaptation, display, distribution or modification, in whole or in part, without the written consent of TMP CONVERT is strictly prohibited and will be sanctioned. TMP CONVERT reserves the right to add, modify or delete information to any time without warning.