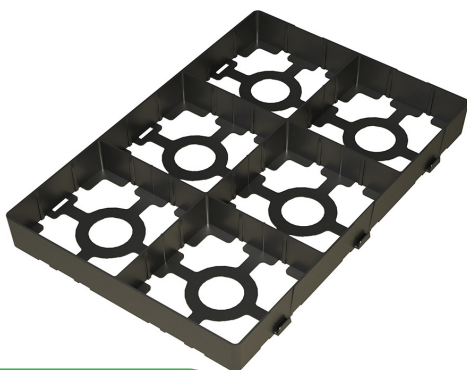




Jouplast®

URBANIT®

PAVING BLOCKS TILE FOR PERMEABLE URBAN AREAS



BENEFITS

- A 100% recycled material for reduced environmental impact.
- Quick and easy to lay.
- Optimal, natural drainage of rainwater.
- Integral interlocking system for maximum stability.
- Creativity: the option of combining block paving, plants and gravels in the same surfacing project.
- URBANIT® block paved surfaces facilitate access for people with reduced mobility.



APPLICATIONS

- Perfect for creating water-permeable surfaces for intensive use as parking areas, access roads, footpaths, cycle paths, etc. (in city centres, shopping centres and many other applications).
- They can also be used to provide clearly differentiated types of parking space (for PRM users, electric vehicles, etc.) and traffic zones, etc.
- Allows the creation of storage areas and facilitates the movement of forklift trucks.
- 100% permeable to rainwater.
- Used for alignment when laying paving blocks.
- Suitable for use by vehicles with axle loadings of up to 20 tonnes.
- Suitable for creation of fire access roads.



RESISTANCE

- Vertical resistance (filled): resistance equivalent to T5 class for paving block (standard in force in France)

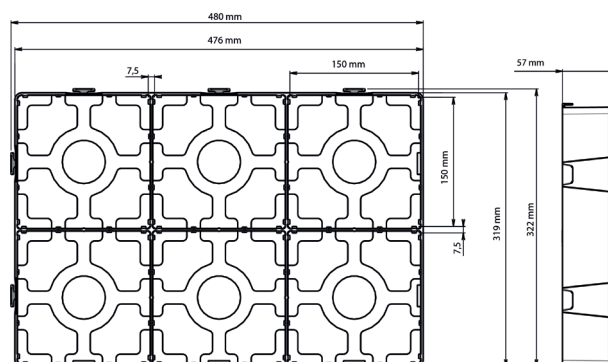


RECOMMENDATIONS

- Type of block paving recommended: 15 x 15 cm x 6 cm high. Please contact your local sales consultant for a list of compatible paving blocks brands.
- Allow 40 paving blocks per m².
- The Urbanit® range is not designed for intensive use by heavy goods vehicles.
- Do not use with hot mixed asphalt.
- Do not drive over empty modules.
- Can be installed on slopes up to 2%.
- Aggregate graded to between 2 [min.] and 5 [max.] can be added above the joints.
- For IFU, see the website.



TECHNICAL DATA SHEET



TECHNICAL DETAILS

- Material: recycled polyolefin
- Colour: black
- Usable dimensions: 476 mm x 319 mm x 57 mm *
- Usable area: 0.1518 m² (6.5876 tiles per m²)
- Overall dimensions: 480 mm x 322 mm x 57 mm *
- Width of joint between paving block: 7.5 mm
- Weight: 0.518 kg ie 3.40 kg/m²
- Resistance to temperature from -30°C to +60°C
- UV and frost resistant



PACKING

- Pallet of 138 parts i.e 20.9484 m² (Stackable)
- Full truck = 1 089,3168 m² (52 stackable pallets ie 26 palletes on the floor)



USE

- Urbanit® is fully compliant with the required puncture resistance of 80 N/cm² for fire access applications.

Document protected by copyright. Any reproduction, copy, extraction, reuse in others publications, translation or adaptation, display, distribution or modification, in whole or in part, without the written consent of TMP CONVERT is strictly prohibited and will be sanctioned. TMP CONVERT reserves the right to add, modify or delete information to any time without warning.



www.jouplast.com



* Manufacturing tolerance: +/- 1%

FT_URBANIT_2407_EN