

TILE EDGING PIECE



BENEFITS

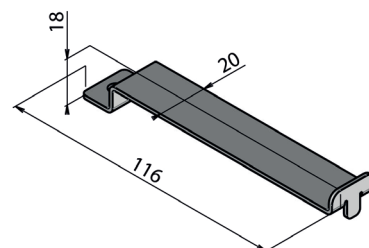
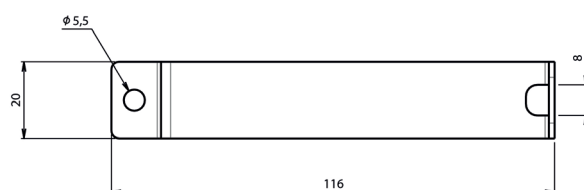
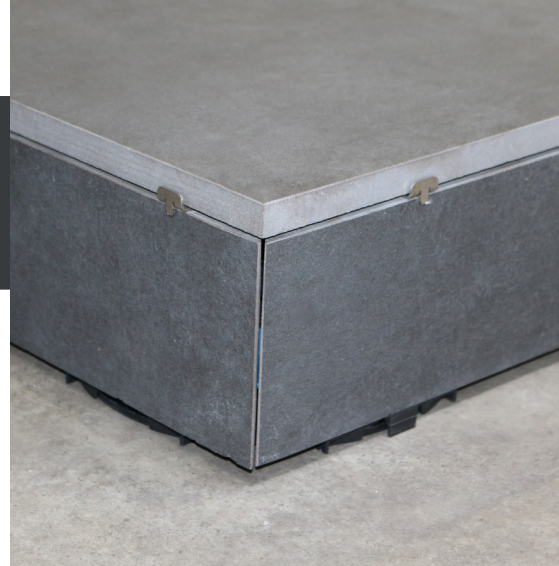
- Discreet: the aesthetics of the installation are preserved.
- Prevents tiles from moving over time.
- Recommended for terraces with high footfall, such as in public buildings.
- Can be used for staggered installation.
- Can be used regardless of the direction in which the PROFILDECK® joist is laid.

APPLICATIONS

- Holds the tiles at the edge of a terrace in place during horizontal movements.
- Locks all the tiles in the installation.

RECOMMENDATIONS

- Terraces and patios for pedestrian use only.
- Outdoor use only.
- Compatible with PROFILDECK® joists, height 55 and 27 mm.
- Position at the junction of 2 tiles.
- For a corner, provide 2 pieces.
- Fix using PROFILDECK® structural screws.
- One structural screw per tile edging piece.
- For IFU, see the website.



TECHNICAL DETAILS

- Material: stainless steel
- Dimensions : 116 mm x 20 mm / Thickness : 1,5 mm
- Weight : 30 g
- UV and frost resistant

PACKING

- Box of 10 pieces