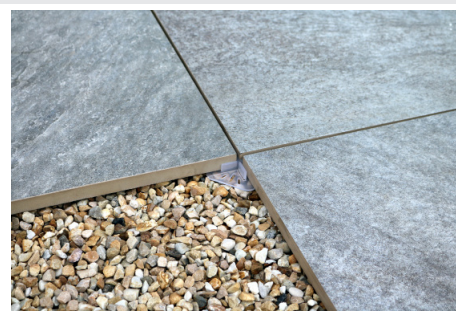
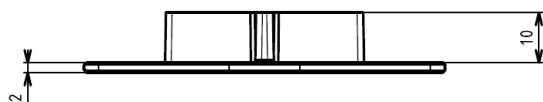


# CROSS DALLE®

## CROSS SLAB STABILIZING SPACER



### TECHNICAL DETAILS



- › Material : recycled polypropylene
- › Colour : Translucent
- › Dimensions : 57 mm x 57 mm
- › Weight : 6 g
- › Spacers : Height : 10 mm / Thickness : 3 mm
- › Resistance to extreme temperature from -30°C to +60°C
- › UV and frost resistant

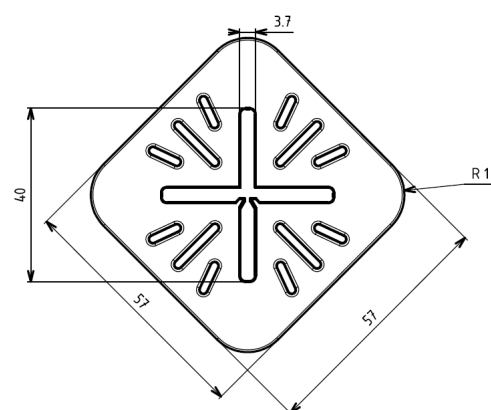
### APPLICATIONS

- › To create terraces and patios with paving, ceramics, tiles, concrete slabs.
- › Perfect when laying slabs directly on gravel or sand.
- › Optimized dimensions for any joint laying.
- › The product can be split on its whole to suit edges and corners, or to deal with specific installation.

### BENEFITS

- › CROSS DALLE® is 100% invisible and will not affect the installation aspect.
- › Spacers and basis can be split easily.
- › The baseplate ensures that paving slabs are level relative to each other and ensures that the spacer is held in position and cannot lift.
- › CROSS DALLE® is multi-perforated to prevent water retention.

### TOP VIEW



### PACKING



Available in box of 48 parts  
(10 bags per box - 25 boxes per pallet)

### RECOMMENDATIONS

- › Terraces and patios for pedestrian use only.
- › Outdoor use only.
- › Ceramic/Porcelain paving - T7, T11 or F+ standard.