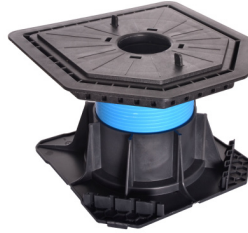
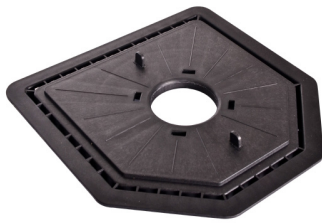
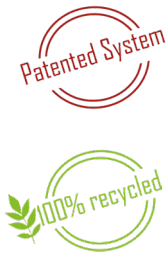
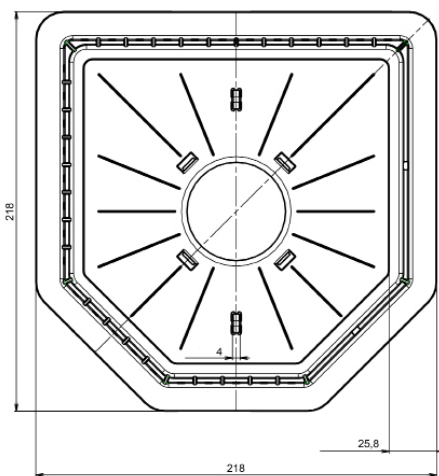


CLEMAN® SIDE FINISHING PLATE

FOR STANDARD AND SELF LEVELLING CLEMAN® RISER



TECHNICAL DETAILS



- › Material : recycled polypropylene
- › Colour : black
- › Dimensions : 218 mm x 218 mm
- › Spacers thickness : 4 mm
- › Weight : 216 g

APPLICATIONS

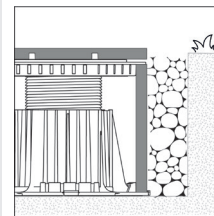
- › To create terraces and patios with paving, ceramics, tiles, concrete slabs.
- › Helps for easy installation at edges and corners.

BENEFITS

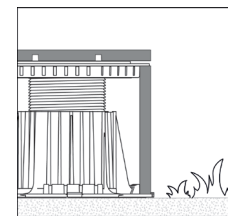
- › Specific shape : ideal for making 45° cut sections.
- › Divisible 4 mm spacers are integrated.
- › Can be used with small dimensions tiles : 20 cm.
- › Glue trap system.
- › No additional tools.
- › An angle trim profile can be used, if preferred.

CONFIGURATIONS

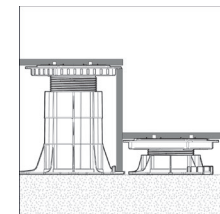
INVISIBLE FINISH



PLINTH FINISH



CREATION OF ONE STEP



RESISTANCE

- › Resistant to extreme temperature from -30°C to +60°C.
- › UV and frost resistant.

PACKING

Available in box of 10 parts
(Stackable pallet)

RECOMMENDATIONS

- › Terraces and patios for pedestrian use only.
- › Outdoor only.
- › Qualification of compulsory "SELF-SUPPORTING" slabs, of class T7, T11 according to standard EN 1339:2004-02.
- › Raises the height of the riser by 10 mm.
- › Adapt the plate position according to the installation.
- › One side finishing plate per riser on the terrace periphery.
- › Can be used with standard and self-levelling CLEMAN® risers except 28/40 mm height.

Document protected by copyright. Any reproduction, copy, extraction, reuse in others publications, translation or adaptation, display, distribution or modification, in whole or in part, without the written consent of TMP CONVERT is strictly prohibited and will be sanctioned. TMP CONVERT reserves the right to add, modify or delete information to any time without warning.

