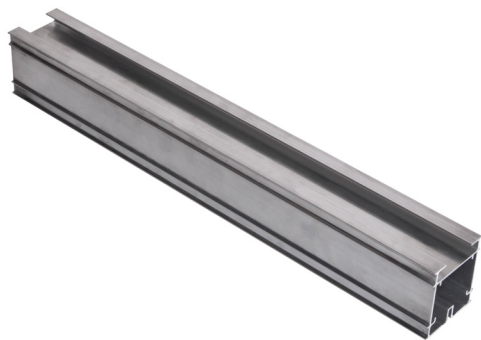


# INSTALLING A SPA ON RISERS PEDESTAL WITH PROFILDECK®



 French Manufacturer

[www.jouplast.com](http://www.jouplast.com)



› Fast installation.

*Products for terraces and patios for pedestrian use only.*

## APPLICATIONS

### FOLLOWING RESTRICTIVE CONDITIONS

- › Spa capacity  $\leq 7$  persons.
- › Spa weight per  $m^2 \leq 500$  kg when operating.
- › Maximum installation height on riser: 200 mm.
- › 2 types of supporting ground :

- Installation on natural stabilised ground, according to the ground preparation recommendations (see advice on installing risers for terrace).
- Installation on concrete slab.

**Please note, both types of supporting ground must support a load of 764 kg /  $m^2$ .**

For natural ground, validate its structural type (no embankment, sensitive clay soil).

For concrete slab, validate that the «load» calculated by the builder corresponds.

The slope should be at most 1% (1 cm / ml).

For poorly levelled ground, the flatness defect should not exceed 1 cm by 3 ml.

**The following ground is excluded :**

- All waterproofed flooring.
- All roof terraces.
- All balconies, loggias or similar.
- $\frac{1}{2}$  level house installations (terrace on underground garage) or similar.

## GLOSSARY

### LOAD BEARING SURFACE

All plates / slabs resistant to a stress of 75 hPa ( $\approx 764$  kg /  $m^2$ ) and bearing on a length of 500 mm (example: concrete slab, ceramic slab, etc.).

### SEPARATION LAYER

Extruded polystyrene panel with thickness  $\geq 20$  mm and with compressive strength  $\geq 75$  hPa.

**Safety first!**  
Use protective glasses and safety gloves



# INSTALLATION OF A SPA ON RISERS PEDESTAL

## STEPS

### 1

#### INSTALLATION OF THE PROFILDECK STRUCTURE

- › Create a grid-like structure using Profildeck® profiles.
- › Place a riser under each profile butt joint.
- › The distance between the profiles must not be more than 500 mm.
- › Distribution of the risers must correspond to that of diagram A and have a density  $\geq 6$  risers / m<sup>2</sup>.
- › To connect 2 profiles lengthwise, insert a profile perpendicularly and fix it with 4 horizontal brackets (see diagram B).
- › This structure must be independent from the rest of the terrace.
- › The spa's installation surface must be 10 cm inward from the bearing surface.

### 2

#### UNDERLAY PREPARATION

- › On the Profildeck® structure, install a bearing surface\* made with ceramic slabs or concrete slabs to obtain a flat surface.
- › Then install the separation layer\* (extruded polystyrene panel, type TMS or similar), with a minimum thickness of 20 mm and a strength of 764 kg / m<sup>2</sup>. [Check the technical sheet of the chosen product.]

### 3

#### END OF CONSTRUCTION

- › When finished, install your spa on this surface.
- › Apart from this structure supporting the spa, the rest of the terrace can be placed on risers in the conventional way.

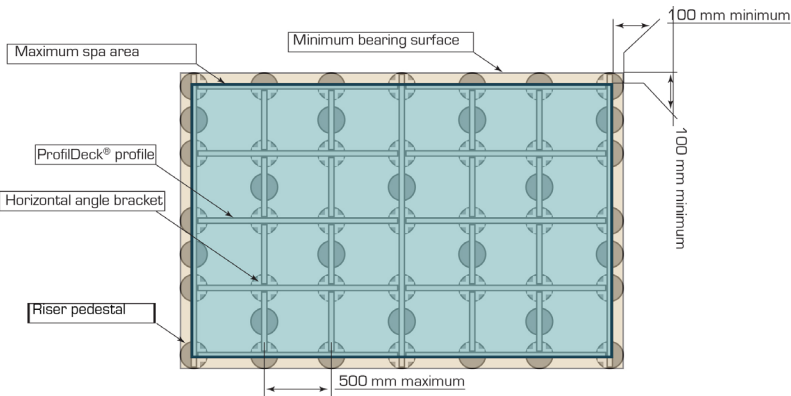


Diagram A

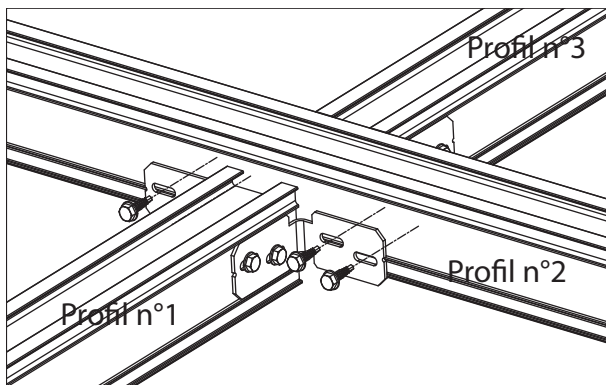
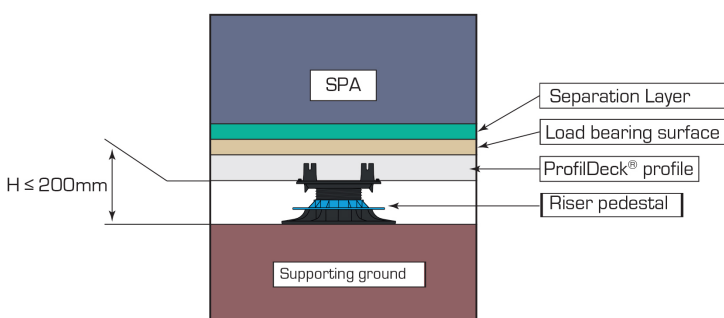
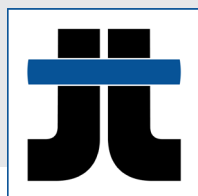


Diagram B



# INSTALLATION OF A SPA ON RISERS PEDESTAL



**Jouplast®**

 **French Manufacturer**

Since 1986, JOUPLAST® have been the leading manufacturer of paving and decking riser pedestals. We continue to grow and develop innovative solutions for both the domestic and commercial markets.

The success of JOUPLAST® is down to a combination of great technical expertise, creative design and a desire to manufacture products which meets the needs of the markets.

JOUPLAST® a brand of :



**TMP CONVERT**

**OUR GOAL : TO PROVIDE A FULL RANGE OF INNOVATIVE PRODUCTS  
THAT MAKE THE JOB EASIER**

[www.tmpconvert.com](http://www.tmpconvert.com)

