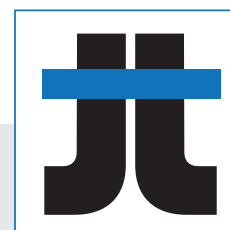
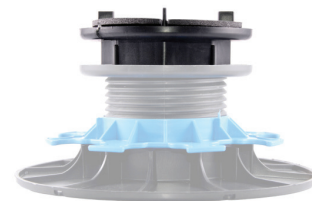


# 25 MM EXTENSION

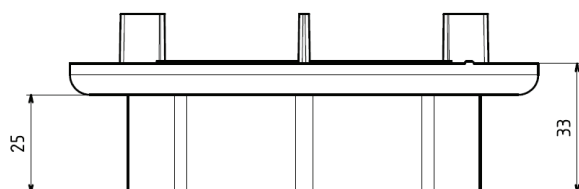
# FOR PAVING RISER PEDESTAL



Jouplast®



## TECHNICAL DETAILS



- › Material : Polypropylene.
- › Colour : Black
- › Diameter : 120 mm
- › Height : 25 mm
- › Weight : 0.070 kg
- › Spacers : Height : 12 mm
- › Resistance to crushing test exceeds 1 T
- › UV and frost resistant
- › 100 % recyclable

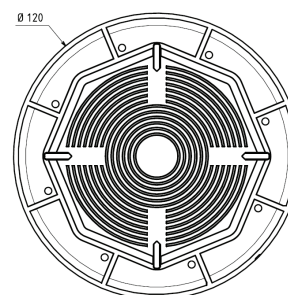
## APPLICATIONS

- › To create terraces and patios with paving, ceramics, tiles, concrete slabs or wooden grating.
- › To be placed on the top the riser

## BENEFITS

- › Spacers can be split easily

## TOP VIEW



## PACKING

120 pcs per box  
Weight : 9 kg



30 boxes per pallet  
Weight : 279 kg

## RECOMMENDATIONS

- › Terraces and patios for pedestrian use only
- › Outdoor use only
- › Ceramic/Porcelain paving - T7 or T11 standard
- › Do not use with riser pedestal lower than 40 mm
- › Do not stack ( One 25mm extension max.)

Document protected by copyright. Any reproduction, copy, extraction, reuse in others publications, translation or adaptation, display, distribution or modification, in whole or in part, without the written consent of TMP CONVERT - JOUPLAST is strictly prohibited and will be sanctioned. TMP CONVERT JOUPLAST reserves the right to add, modify or delete information to any time without warning.