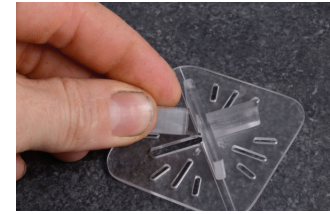
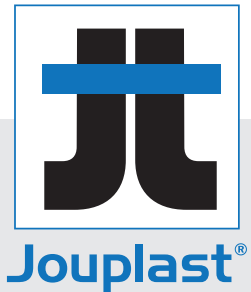
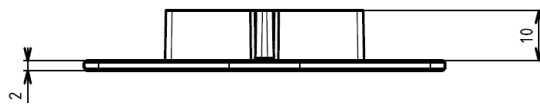


CROSS DALLE®

CROSS SLAB STABILIZING SPACER



TECHNICAL DETAILS



- › Material : Polypropylene
- › Colour : Translucent
- › Dimensions : 57 mm x 57 mm
- › Weight : 6 g
- › Spacers : Height : 10 mm / Thickness : 3 mm
- › Resistance to extreme temperature from -30°C to +60°C
- › 100% recyclable

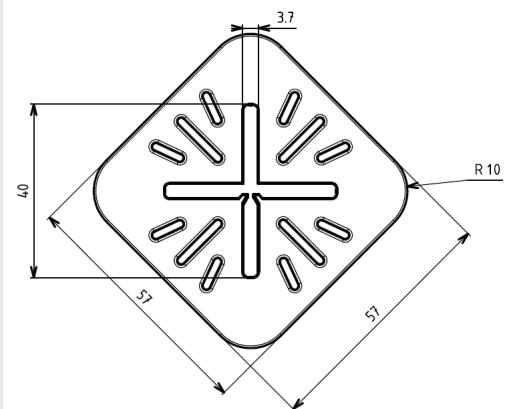
APPLICATIONS

- › To create terraces and patios with paving, ceramics, tiles, concrete slabs.
- › Perfect when laying slabs directly on gravel or sand
- › Optimized dimensions for any joint laying
- › The product can be split on its whole to suit edges and corners , or to deal with specific installation.

BENEFITS

- › CROSS DALLE® is 100% invisible and will not affect the installation aspect
- › Spacers and basis can be split easily
- › The Cross dalle ® spacer helps in maintaining ceramic slabs smooth flatness along with the spacer position, without uprising.

TOP VIEW



PACKING



Bag of 48 pces - 10 bags per box
Weight : 4 kg



25 boxes per pallet
Weight : 117 kg

RECOMMANDATIONS

- › Terraces and patios for pedestrian use only
- › Outdoor use only
- › Ceramic/Porcelain paving - T7 or T11 standard

Document protected by copyright. Any reproduction, copy, extraction, reuse in others publications, translation or adaptation, display, distribution or modification, in whole or in part, without the written consent of TMP CONVERT - JOUPLAST is strictly prohibited and will be sanctioned. TMP CONVERT JOUPLAST reserves the right to add, modify or delete information to any time without warning.